



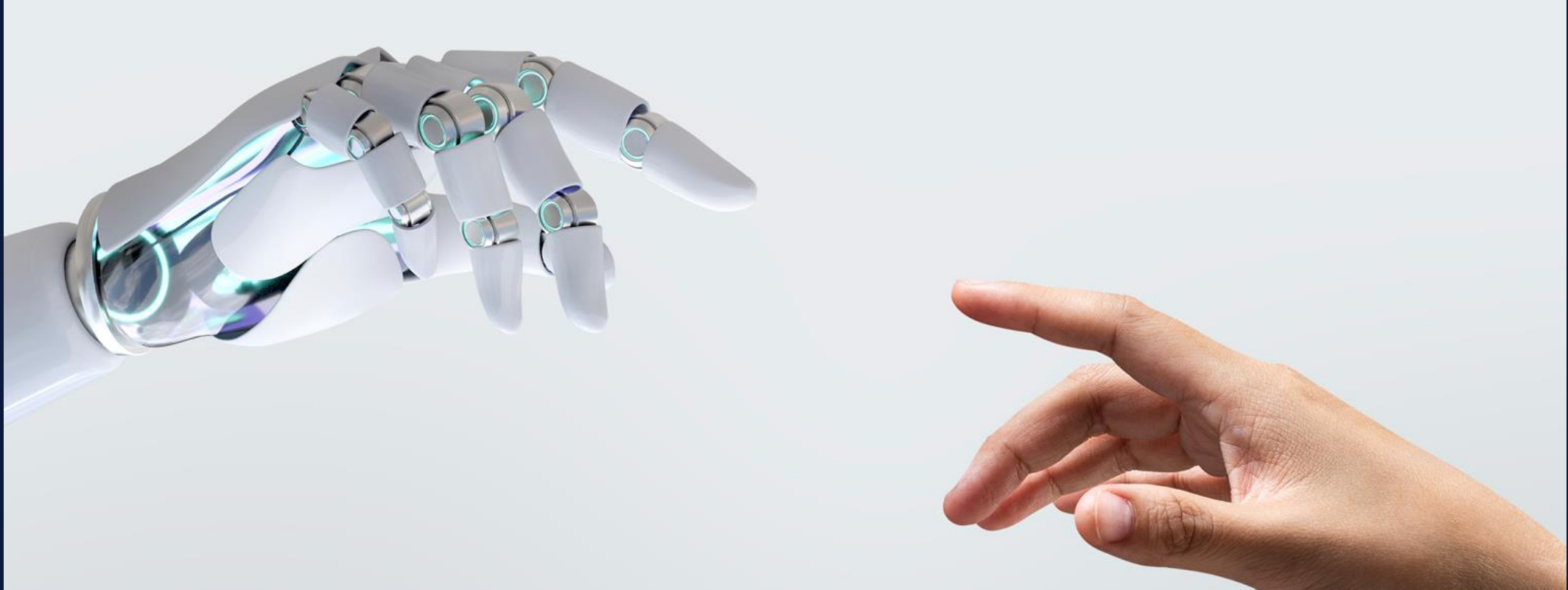
# Smart Moves: Trends and Opportunities in the Connected Home

---

Eric Smith, CTO OliverIQ



# Home – Most Important UI/UX



In partnership with  
SIA  
EDUCATION at ISC

Built by  
RX In the business of  
building businesses

# Home – Most Important UI/UX



What AI Thinks  
About AI and  
Home Automation

## Gemini

Here's my ranking of AI interface importance for consumers in the next decade, along with the reasoning:

1. **Car:** AI is already significantly impacting the automotive industry with advanced driver-assistance systems (ADAS). In the next 10 years, we'll likely see a surge in AI-powered features like:
  - Enhanced Autopilot Systems: Moving towards higher levels of vehicle autonomy, potentially even Level 4 autonomy in certain areas.
  - Personalized In-Car Experiences: AI will curate entertainment, communication, and comfort settings based on individual preferences and driving habits.
  - Predictive Maintenance: AI will analyze vehicle data to anticipate potential issues and recommend proactive maintenance.
2. **Home:** AI is poised to transform our living spaces into truly smart homes. Key areas of impact include:
  - Seamless Automation: AI will optimize lighting, temperature, appliances, and security systems based on learned behaviors and preferences.
  - Personalized Entertainment: AI will power intuitive and interactive entertainment systems that cater to individual tastes.
  - Enhanced Communication: AI-powered assistants will facilitate effortless communication within the home and with the outside world.
3. **Office:** While AI is undoubtedly transforming the workplace, its interface for the average consumer in an office setting might be less direct compared to cars or homes. We'll see AI advancements in:
  - Productivity Tools: AI will assist with scheduling, email management, and task prioritization.
  - Collaboration Platforms: AI will facilitate more efficient and effective teamwork through intelligent meeting summaries and action item tracking.
  - Personalized Learning: AI will provide tailored training and development opportunities for employees.
4. **Other:** This category encompasses a broad range of areas where



## ChatGPT

Here's a ranking for the importance of AI interfaces for consumers in the next decade:

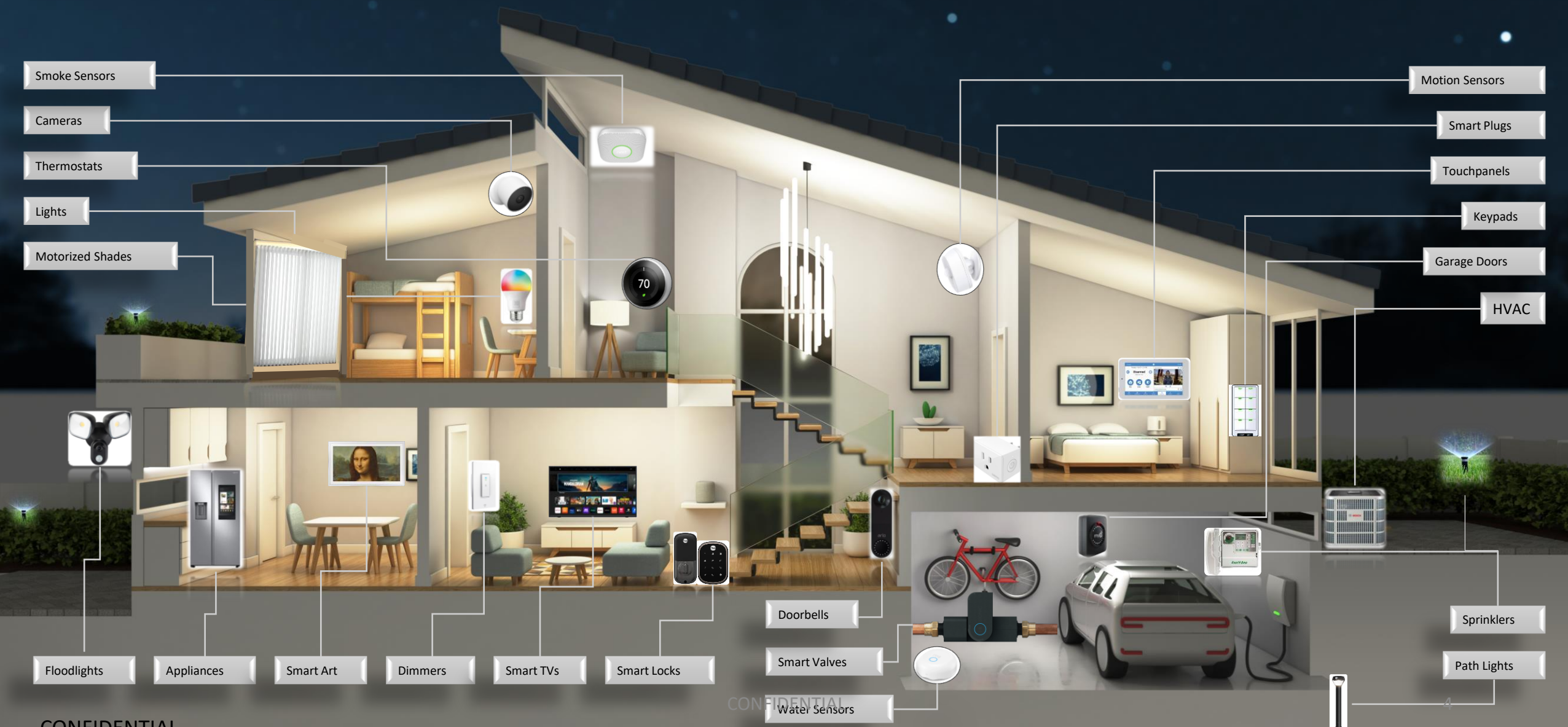
1. **"Home":** As AI technology advances, smart home systems will likely dominate consumer interfaces. From climate control and security to personalized entertainment and health monitoring, AI will become the hub of home management. Consumers will rely on AI to automate and optimize daily tasks, enhance convenience, and even monitor health, making the home the top space for impactful AI use.
2. **"Car":** With the growth of autonomous driving and connected car technology, vehicles are becoming mobile smart spaces. AI interfaces in cars will go beyond navigation to offer predictive maintenance, enhanced safety features, personalized in-car experiences, and seamless integration with mobile devices and home systems. This will transform cars into extensions of smart homes and offices, especially as self-driving technology advances.
3. **"Office":** AI in the workplace is evolving rapidly, assisting with productivity, decision-making, and collaboration. While tools like AI-driven virtual assistants, data analytics, and real-time language translation are already common, AI will increasingly shape personalized workflows and automation. However, its impact may be more industry-specific and tailored to roles that depend on technology and data.
4. **"Other":** This category includes wearable devices, retail experiences, and public spaces. AI interfaces here will focus on health monitoring (e.g., wearables), personalized shopping experiences, and convenience features in public spaces like AI-powered kiosks and automated customer support. Although essential, these interfaces will likely be supplementary to home, car, and office interfaces.

Homes and cars are set to lead in importance because of their



# The Intelligent Home

## Filled with Opportunity



CONFIDENTIAL

# Intelligent Living

## Security

Intrusion Prevention

## Protection

Flood Prevention

## Comfort

Welcome Home

## Convenience

All Off

## Entertainment

Movie Night

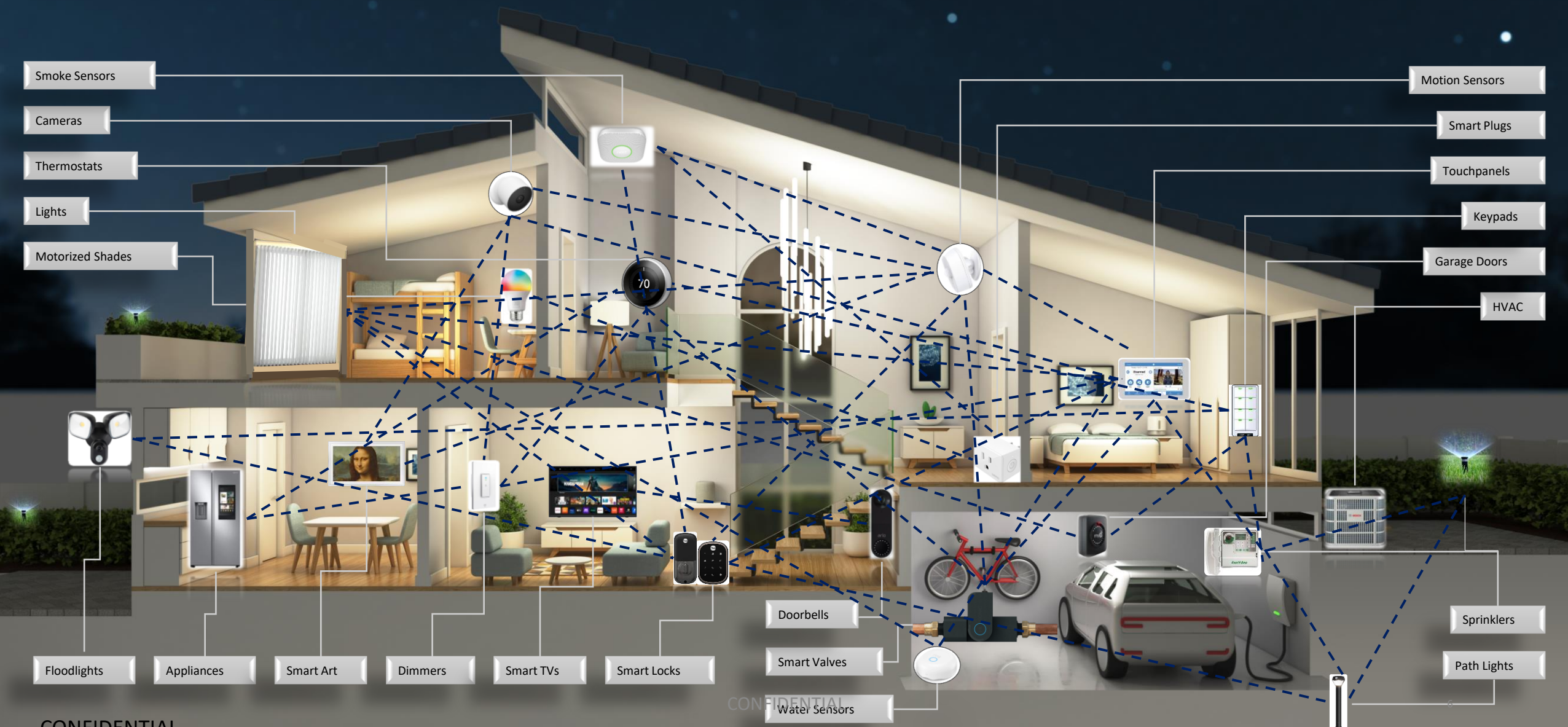
## Efficiency

Energy Savings



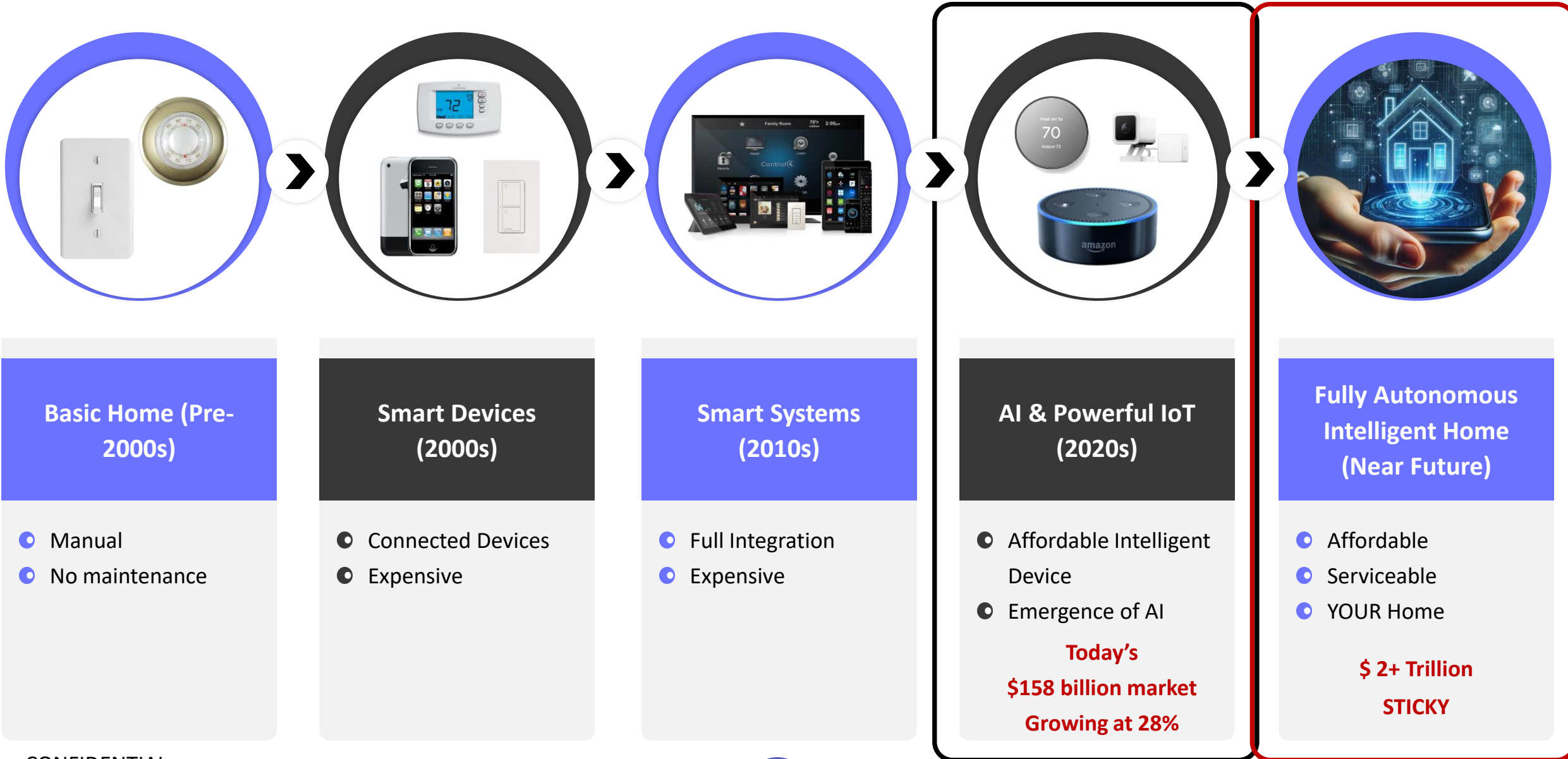
# The Connected Home

## Filled with Challenges



CONFIDENTIAL

# Historical Progression of the Home





# IT Department

**Office**



2 ½ Connected Devices

**Home**



20 Connected Devices

Source: Parks Associates  
Research, 2024

In partnership with  
**SIA**  
**EDUCATION at ISC**

Built by  
**RX**  
In the business of  
building businesses



# Intelligent Living – Enabled by AI

# Welcome Home



## Flood Prevention



Good Morning



## Sunset



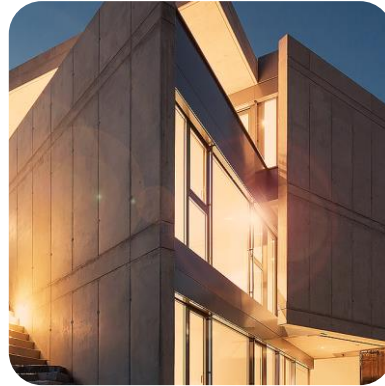
## Vacation



Timer



Away



Goodnight

[illegible]





# Thank you!

## Have thoughts about SIA Education@ISC?

Scan the QR Code on the left to provide your feedback  
on SIA Education@ISC Sessions at ISC West

In partnership with  
SIA  
EDUCATION at ISC

Built by  
PX In the business of  
building businesses