



NEW TECHNOLOGY IMPERATIVES FOR PERIMETER SECURITY

KEVIN HANDERSON, *VP OF WEB DEVELOPMENT & SPECIAL PROJECTS*, LRG MARKETING (Moderator)

GERALD BECKER, *VP OF MARKET DEVELOPMENT & ALLIANCES*, QUANERGY

BRAD DONALDSON, *VP OF COMPUTER VISION & GM*, SAFR FROM REALNETWORKS

CHRIS HOBBS, *DIRECTOR, NATIONAL ACCOUNTS*, ASSA ABLOY OPENING SOLUTIONS

KURT MEASOM, *VP OF GLOBAL ENTERPRISE ACCOUNTS*, BOON EDAM

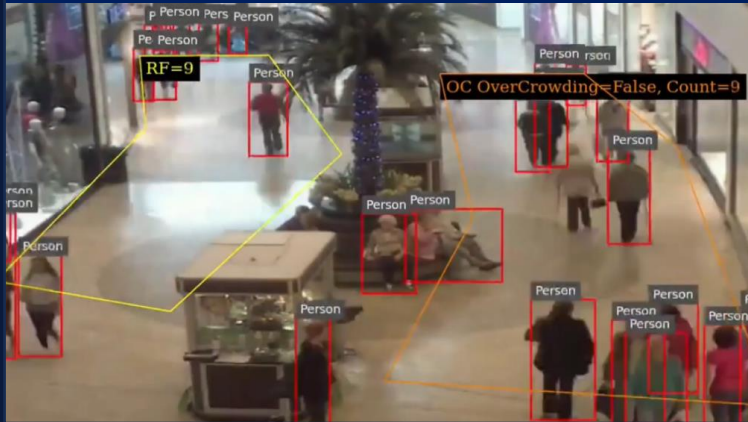




GERALD BECKER
*VP OF MARKET DEVELOPMENT
AND ALLIANCES*
QUANERGY

Critical Limitations of Traditional 2D Security Cameras

Incorrect object classification



Even with AI, video analytics sees object in 2D. This leads to misclassification of objects, poor people tracking, and very high amounts of false and nuisance alarms.

Limited Range and Field of View



Cameras have significantly lower range and narrower field of view generating dangerous blind spots. Cameras' range is further reduced in low-lighting conditions.

Cameras get distracted by objects in motion, wind, large approaching vehicles, etc.

Lack of Continuous Tracking



Need multiple monitors to track people as they move from the range of one camera to the other.

Existing legacy security systems are unable to continuously track object as they move from one camera to the other.

3D LiDAR solutions critical for the next generation of automation

3D LiDAR Sensor

LiDAR

Time of Flight sensor measures distance of reflected pulses

Point Cloud

Real-time 3D imaging

3D Perception Software

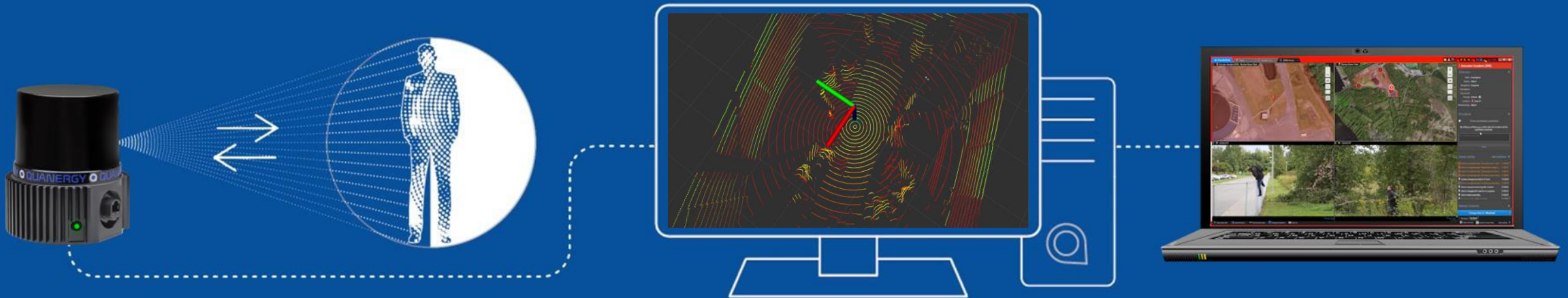
Object classification

People, Vehicle, other
Real-time position, direction and speed

Automation Process

AI/ML applications

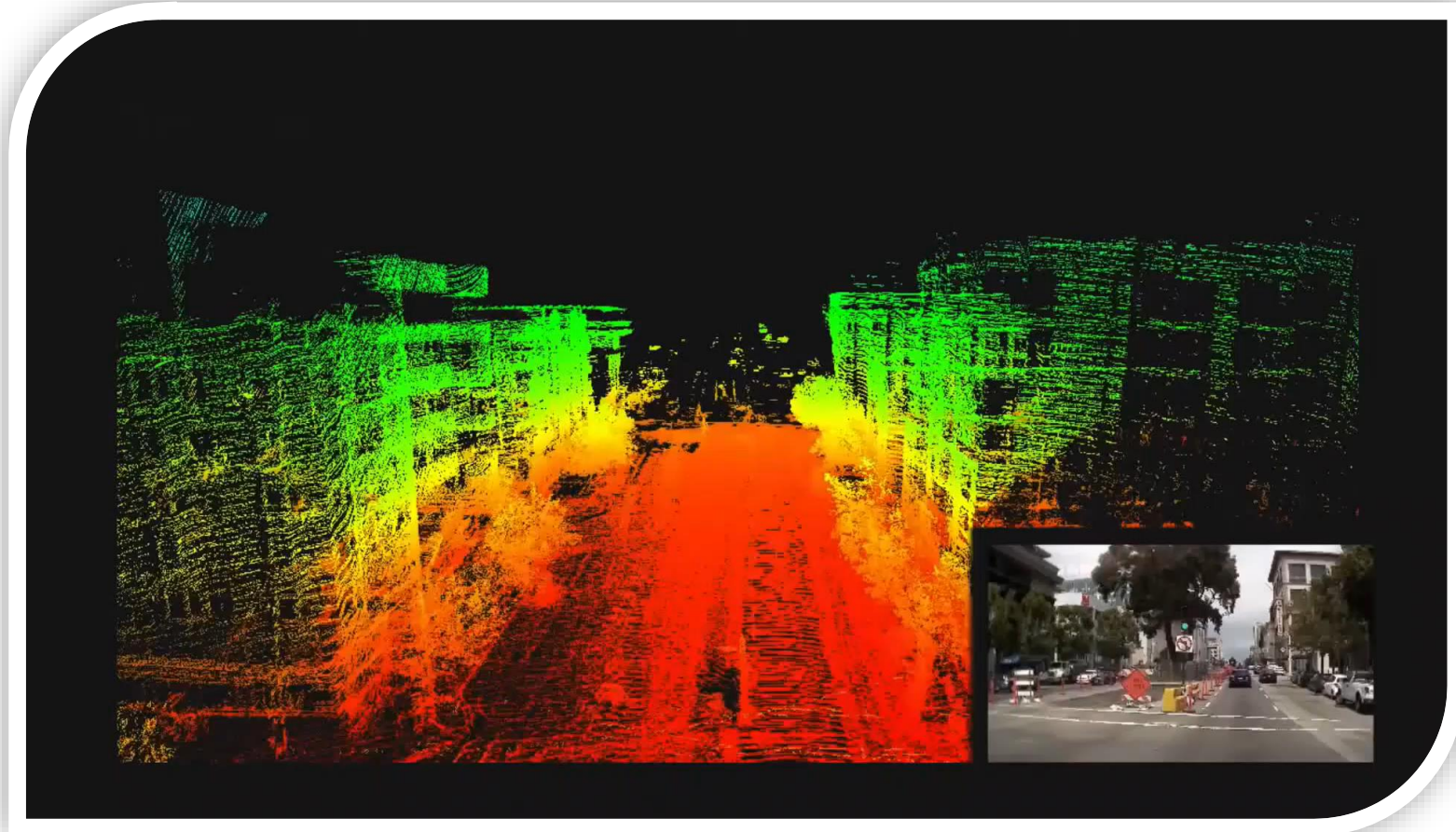
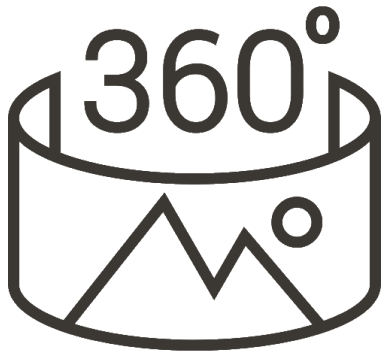
Intruder tracking, traffic and queue management, people counting, etc.



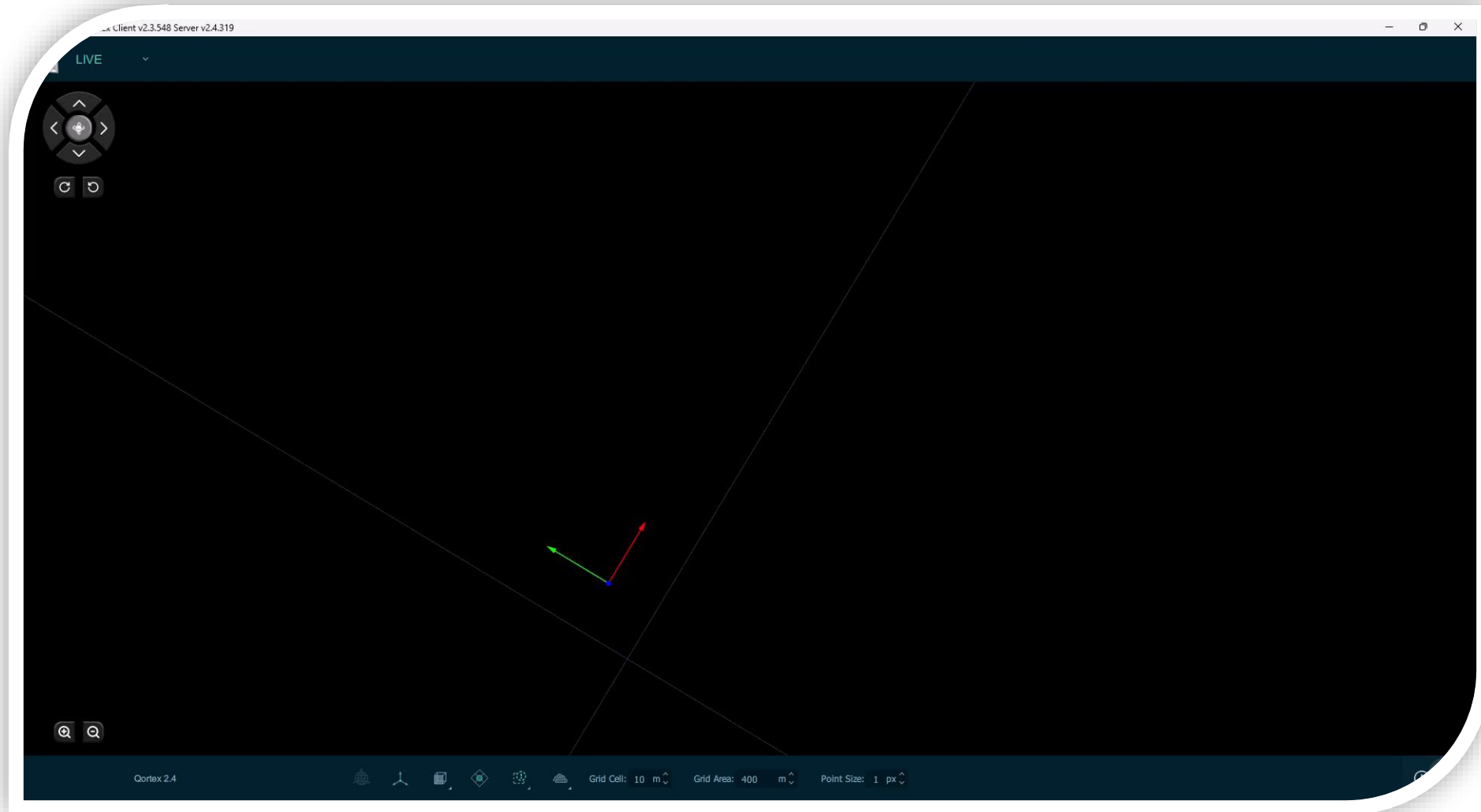
Operates in pitch-dark conditions — 3 football fields coverage with a single sensor — Zero PII risk

3D LiDAR solutions can replace 5-10 cameras with a single sensor

LiDAR in Action



3D LiDAR Software in Action



Q-Track LR Security

- Ideal for large spaces, perimeters and fence lines
- 140m diameter

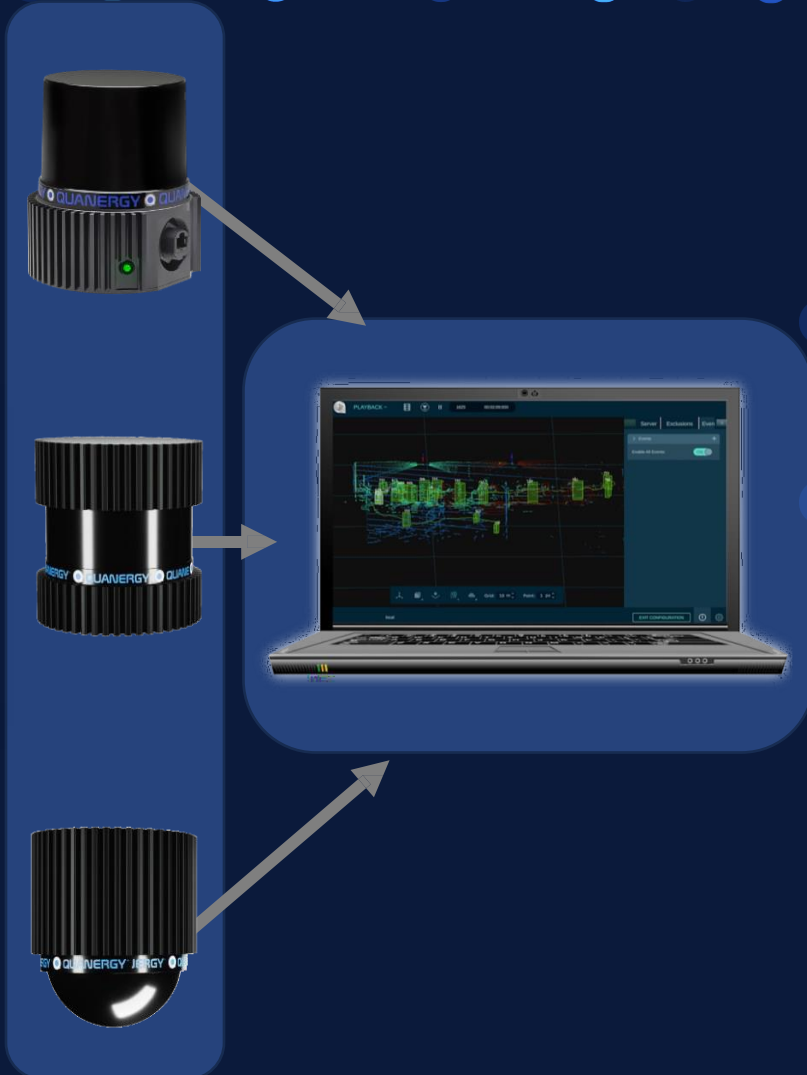


Q-Track HD Security & Flow

- Ideal for perimeters and fence lines, long corridors, tracking large crowds, occupancy, measurements
- 80m diameter, 70° Vertical FOV

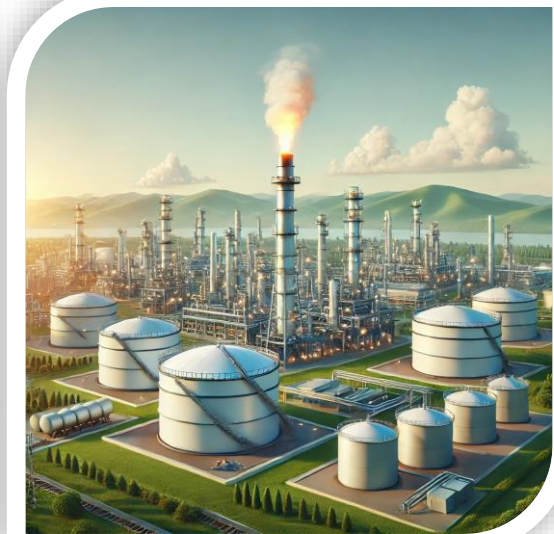
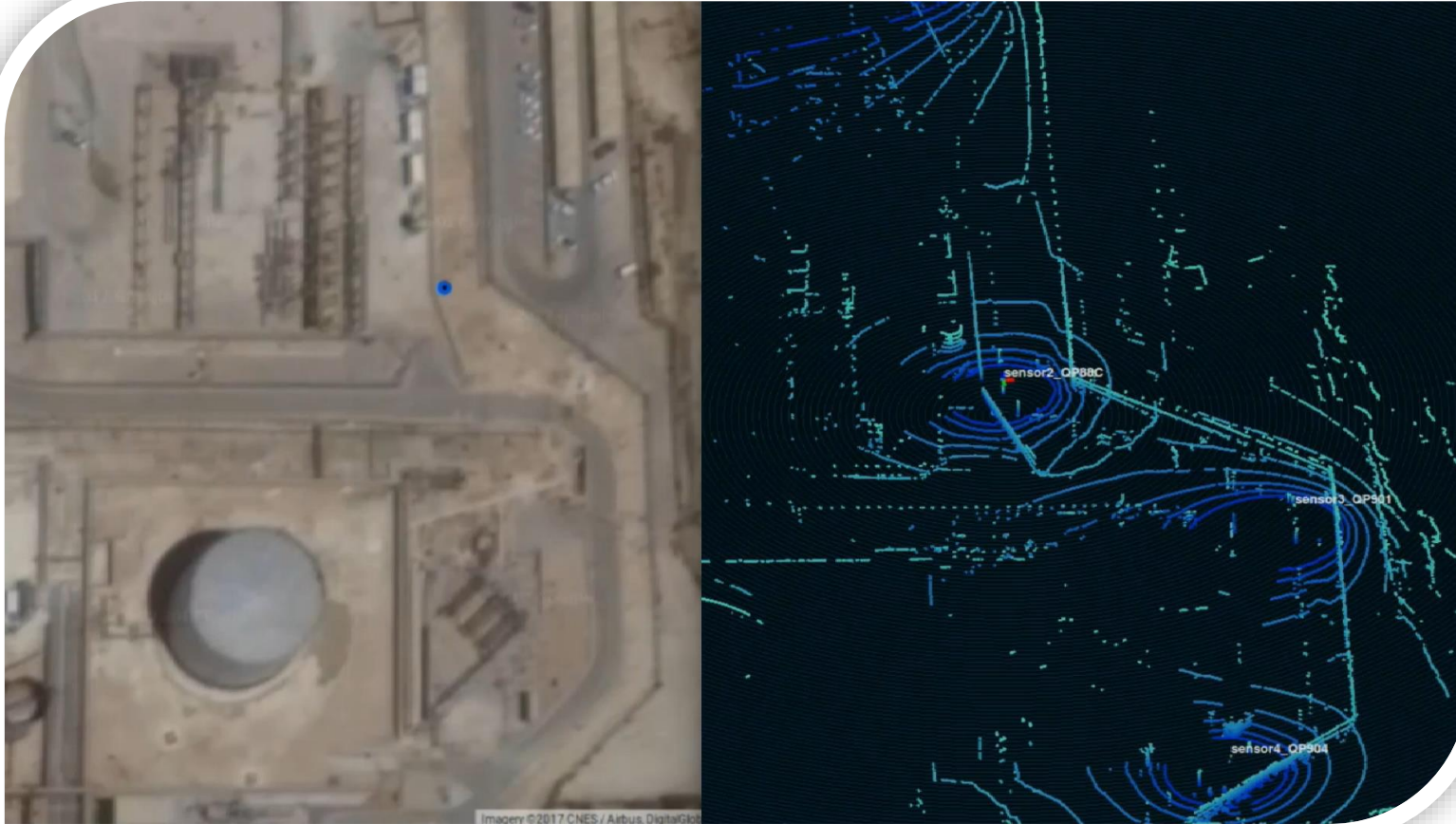
Q-Track Dome Security & Flow

- Ideal for perimeters and fence lines, smaller spaces, lower ceilings, man traps
- 40m diameter, 90° Vertical FOV

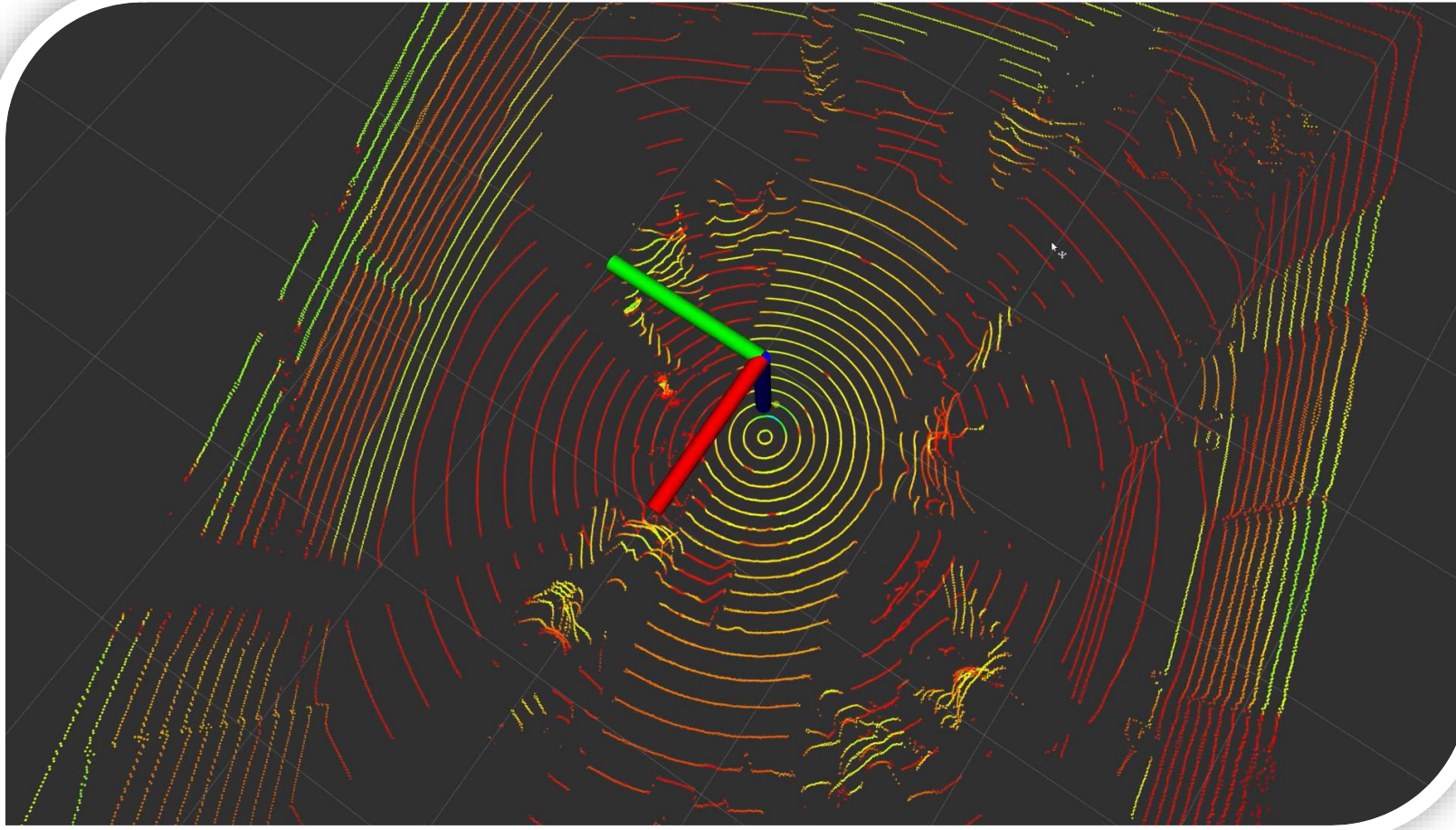


99% accurate continuous tracking, and classification – 95% false alarm reduction

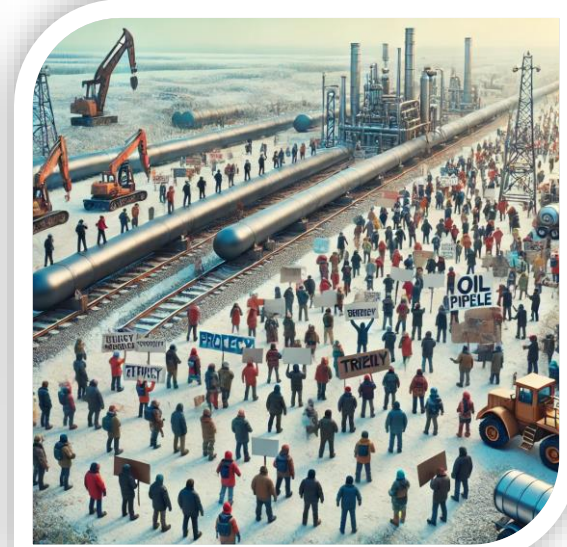
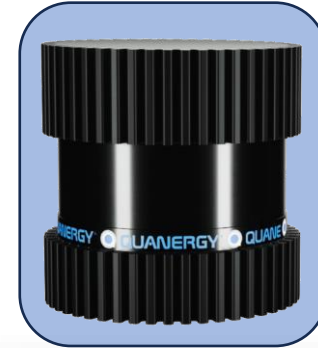
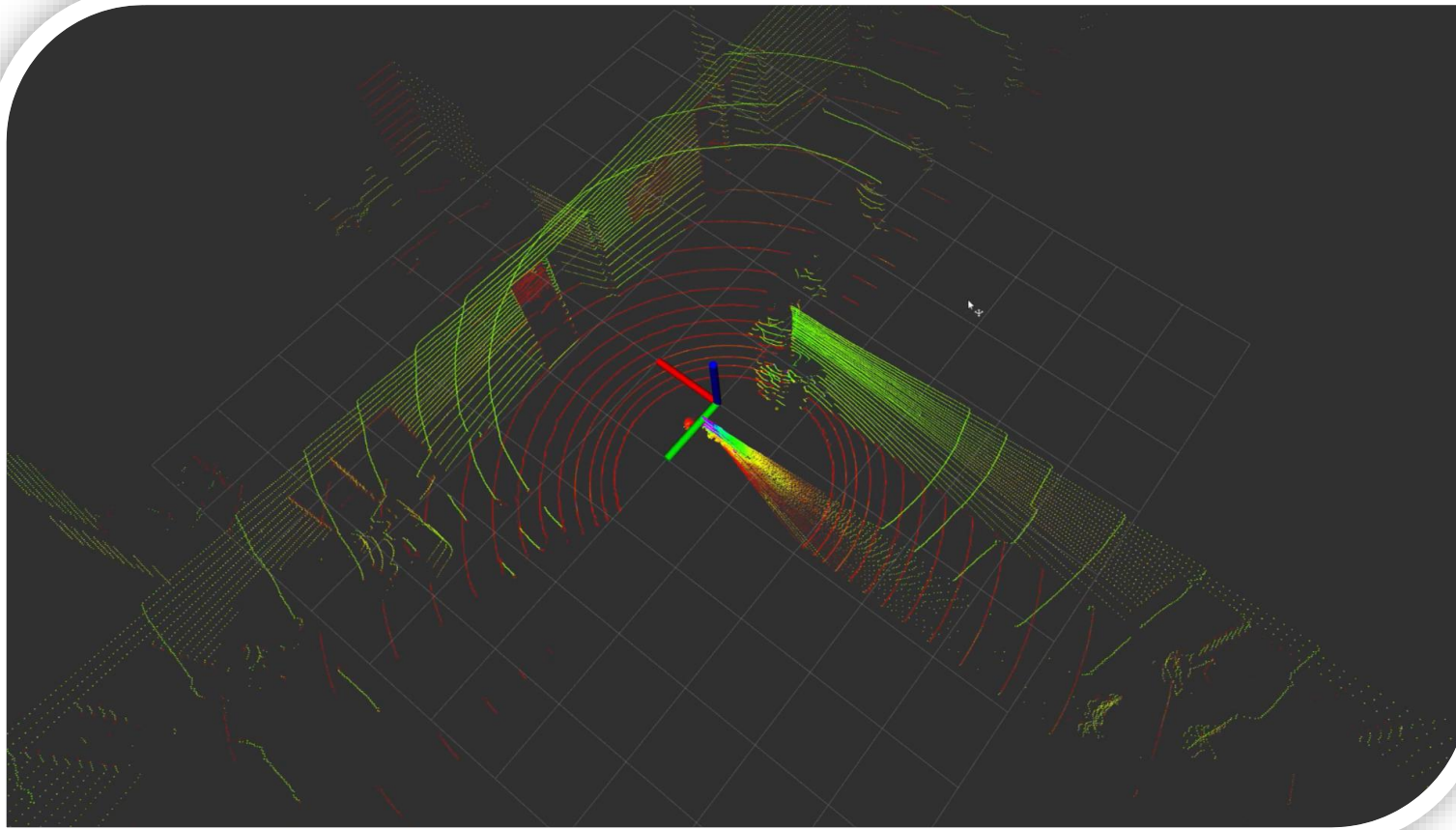
PIDs, Long Range Applications



Man traps, Office Evac, Corridors, People Counting



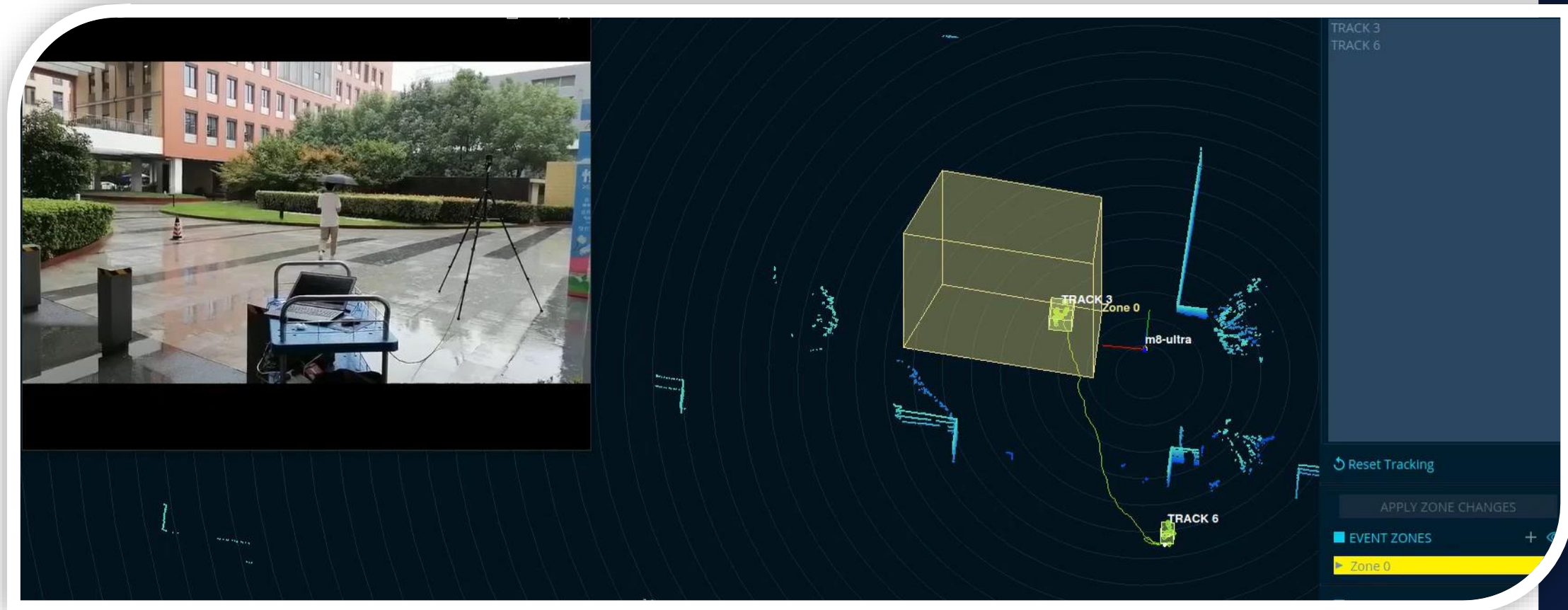
Dense Scenes, 1000+ Objects



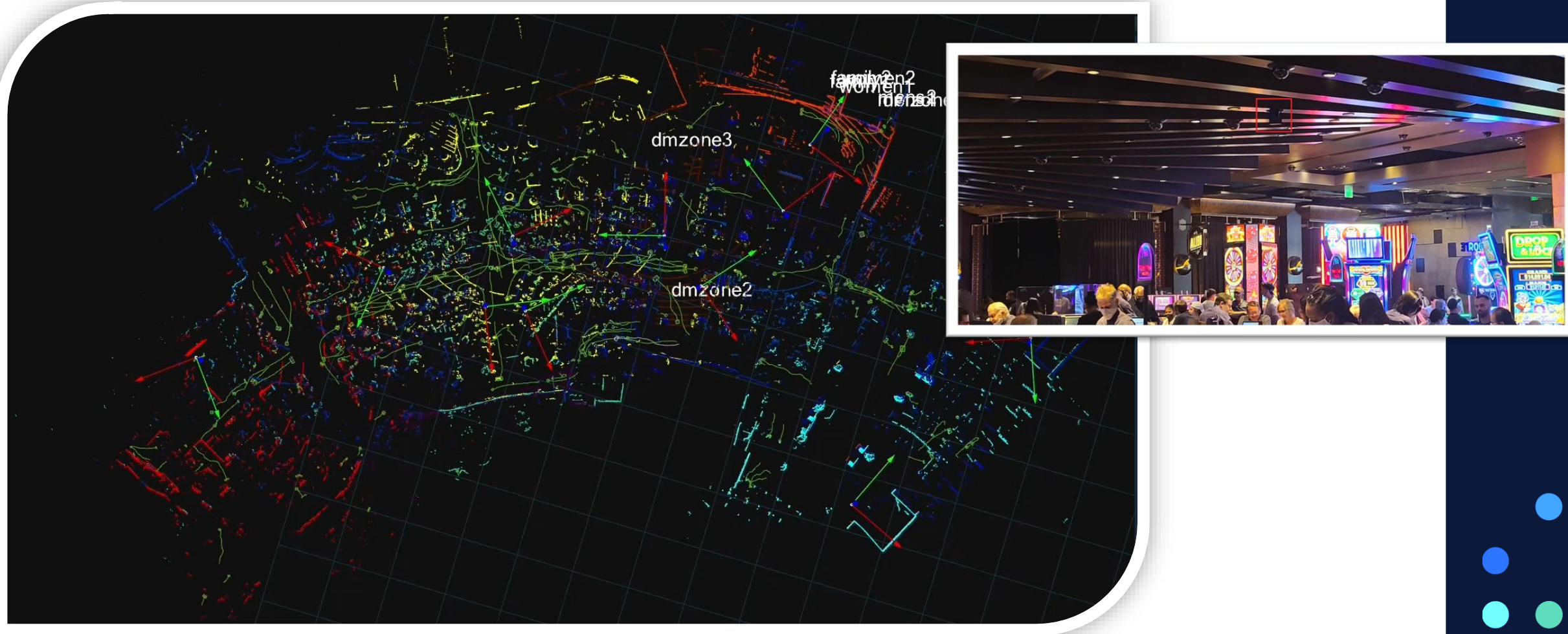
Outdoor Tracking with LiDAR & Cameras



LiDAR in the Rain



Continuous Tracking (15,000 m2) – 10 Sensors



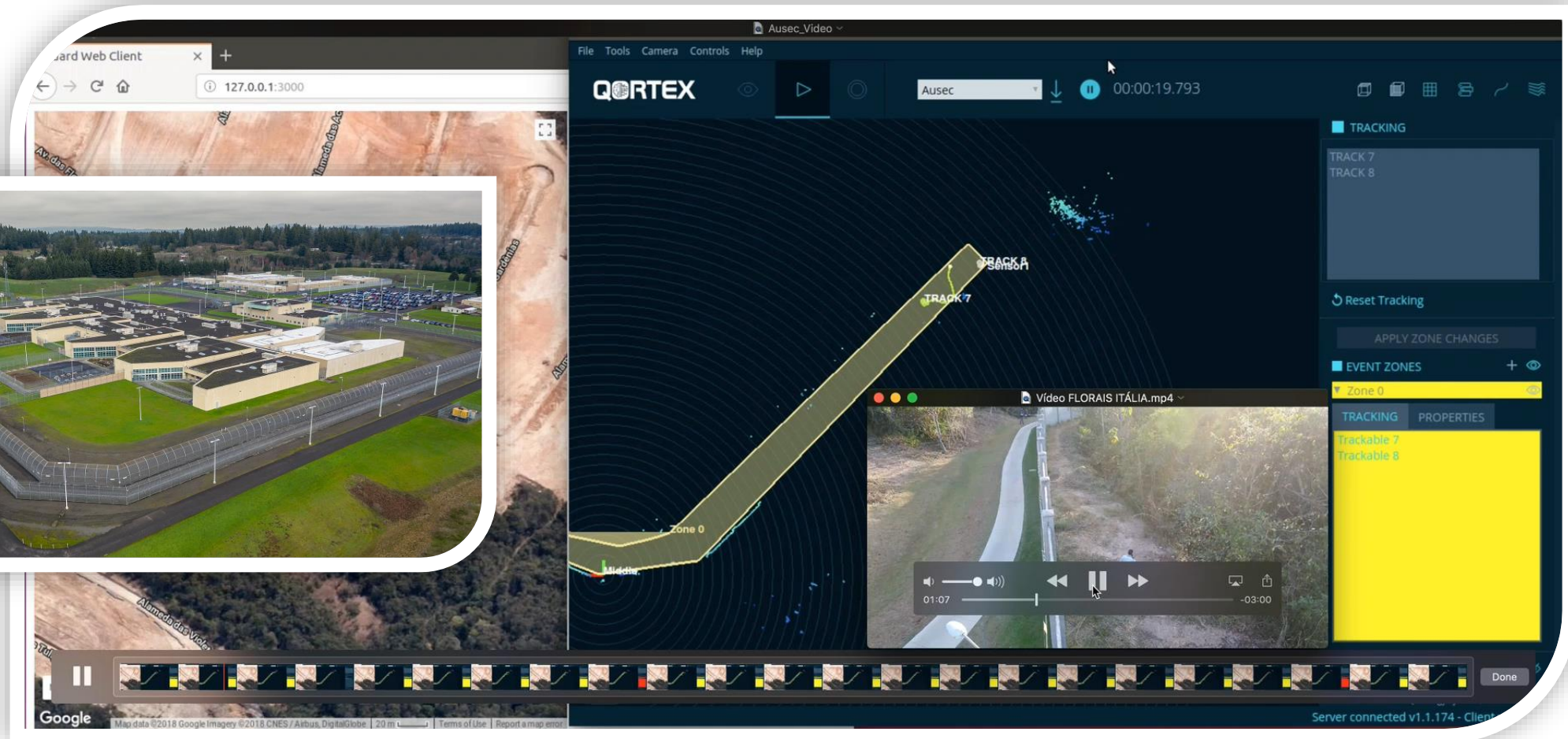
PIDs for Substation Sites (NO RF ISSUES)



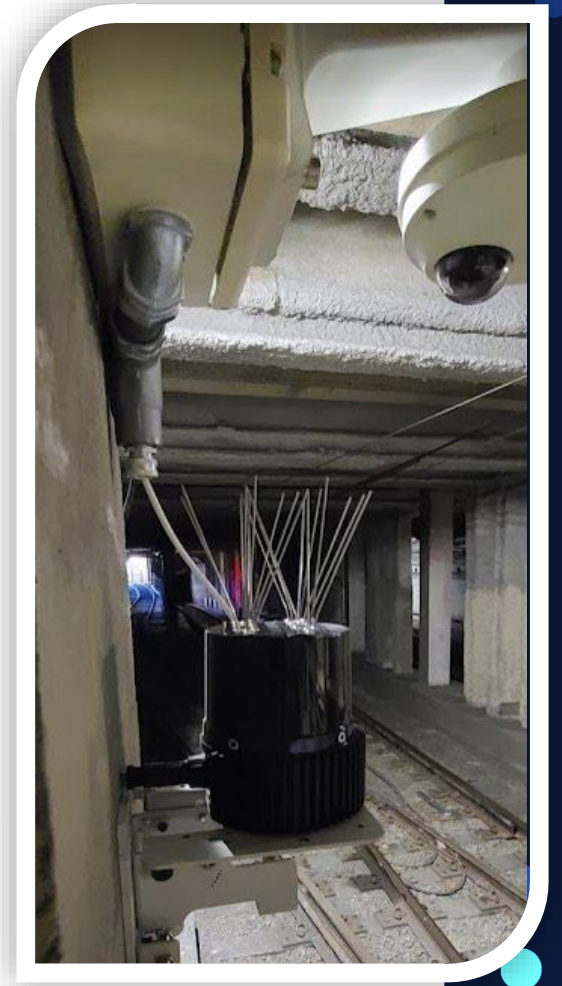
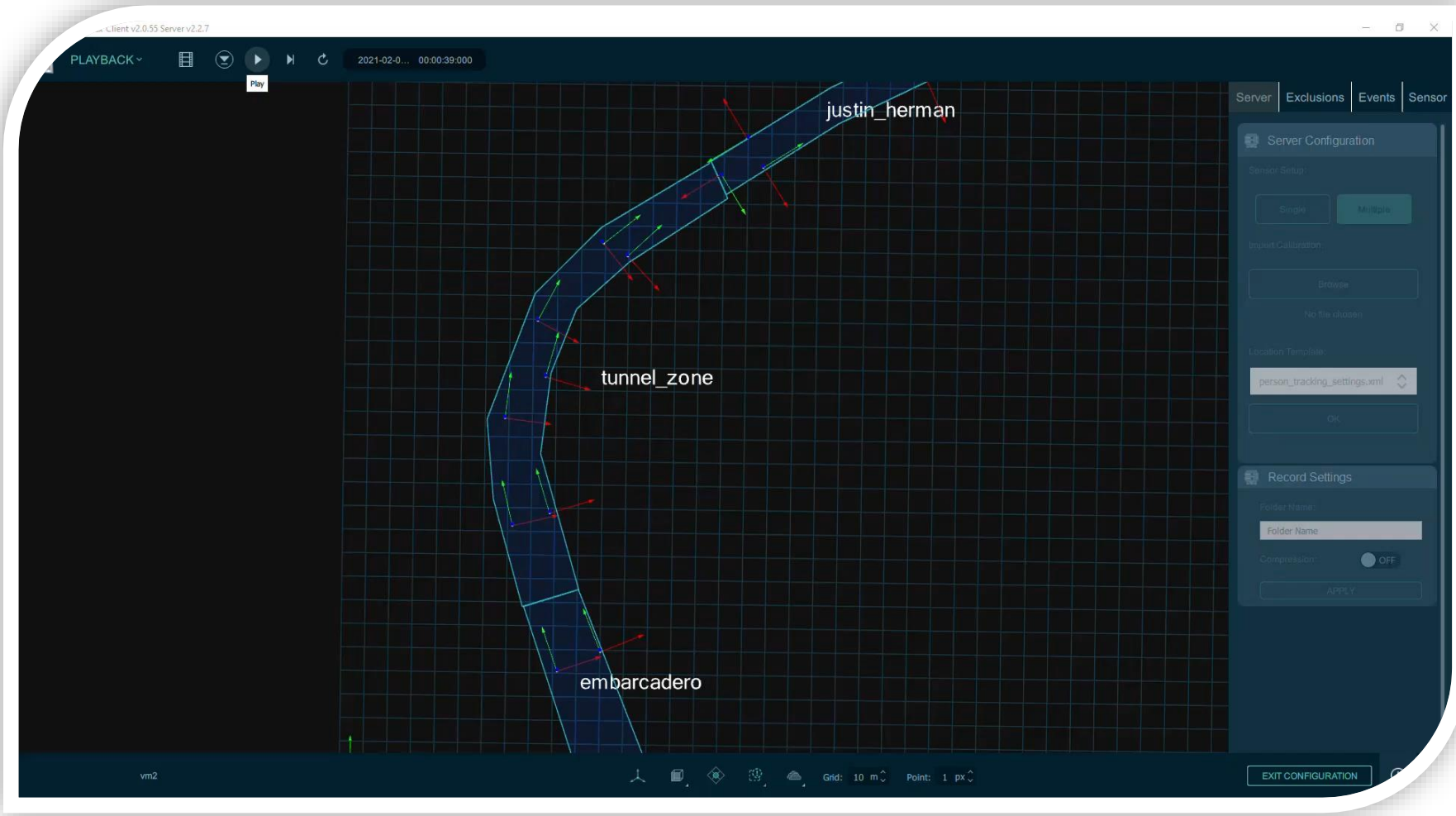
PIDs for Oil & Gas Sites



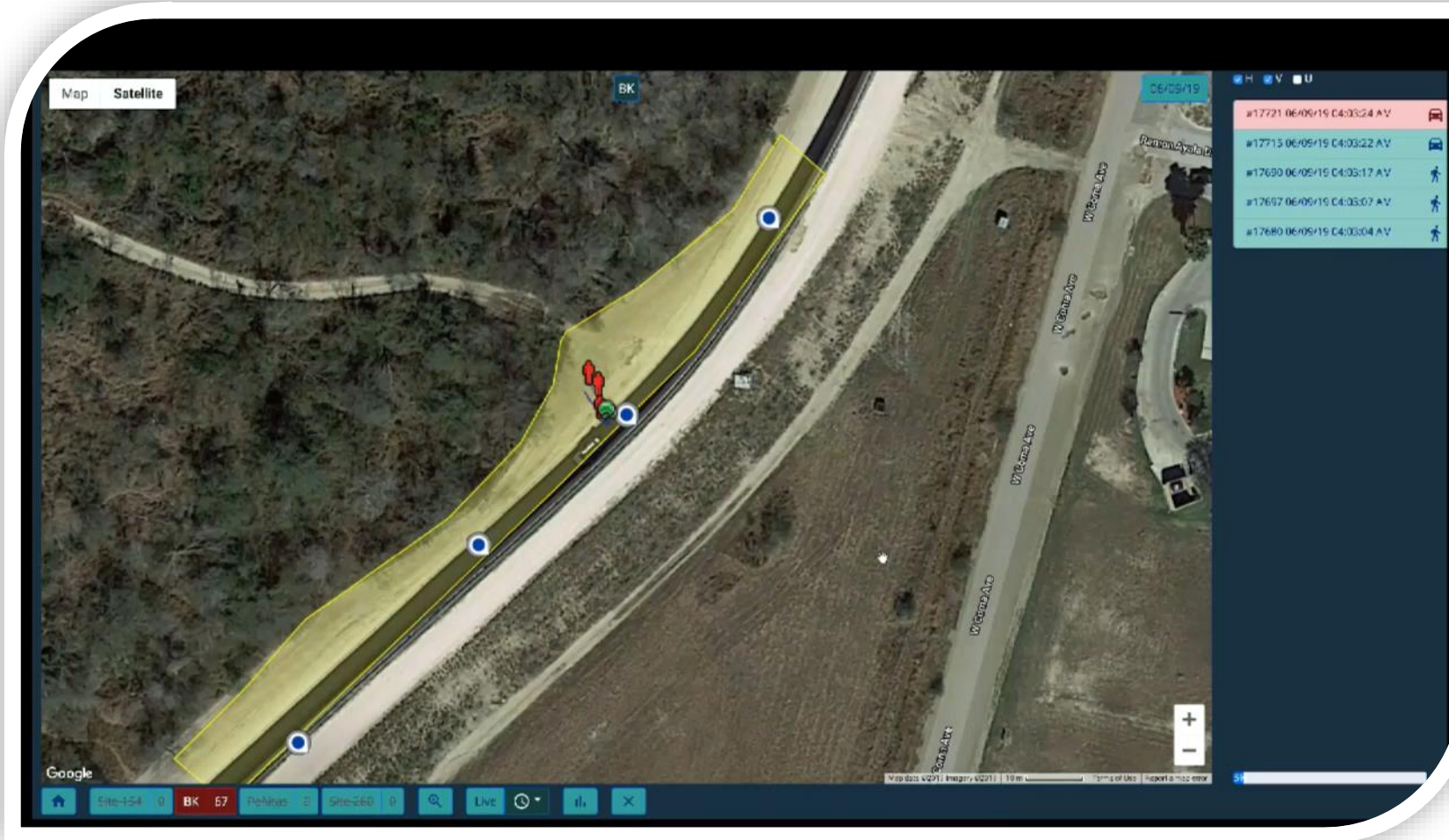
PIDs for Correctional Sites



PIDs for Transportation Sites



PIDs for Border Sites



Case Study:

Global cloud services provider perimeter intrusion detection

Problem

- Experienced over 178,000 false alarms in 33 weeks
- False alarms led to guard fatigue
- Missed 2 actual intrusions

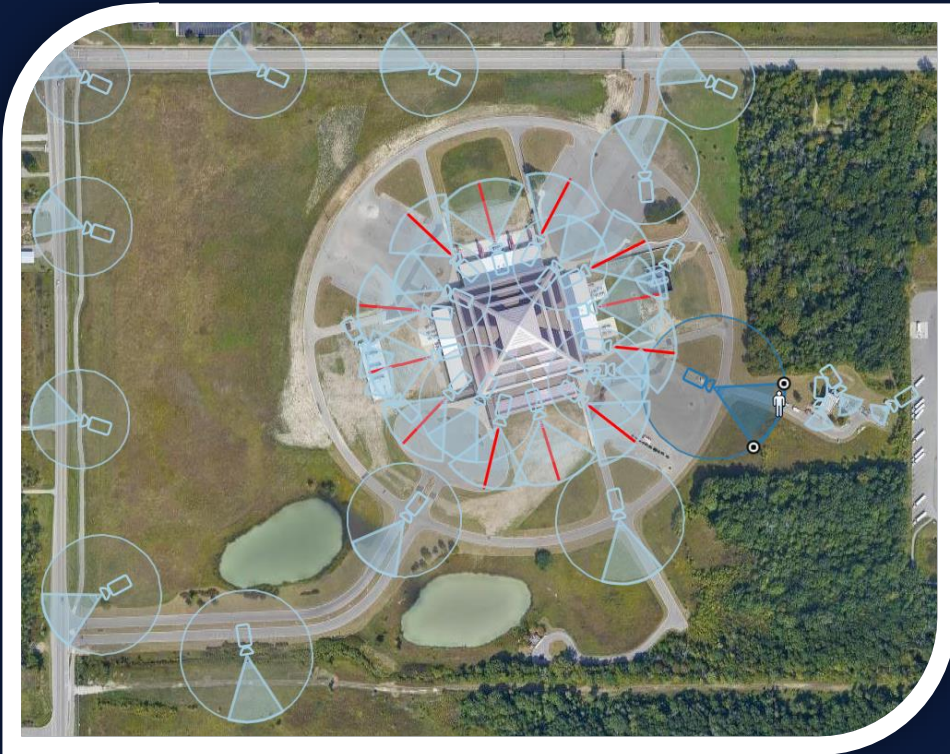
Solution

- After a myriad of testing, against 14 other technologies, Q-Track was selected as the only solution able to pass all tests
- Hundreds of Q-Track units deployed and integrated into existing security infrastructure
- Deployment was tailored for the specifications of each datacenter



TCO

32 Sensor Deployment



32 Sensor Deployment





BRAD DONALDSON
VP OF COMPUTER VISION & GM
SAFR FROM REALNETWORKS

Challenges with Perimeter Surveillance

- Large area to cover
- Environmental factors – weather, complex lighting, terrain & obstacles
- False alarms & detection accuracy – real threats can be missed
- Connectivity & Power – remote locations may lack reliable power or network
- Remote or unattended access points
- High cost of AI-based analytics



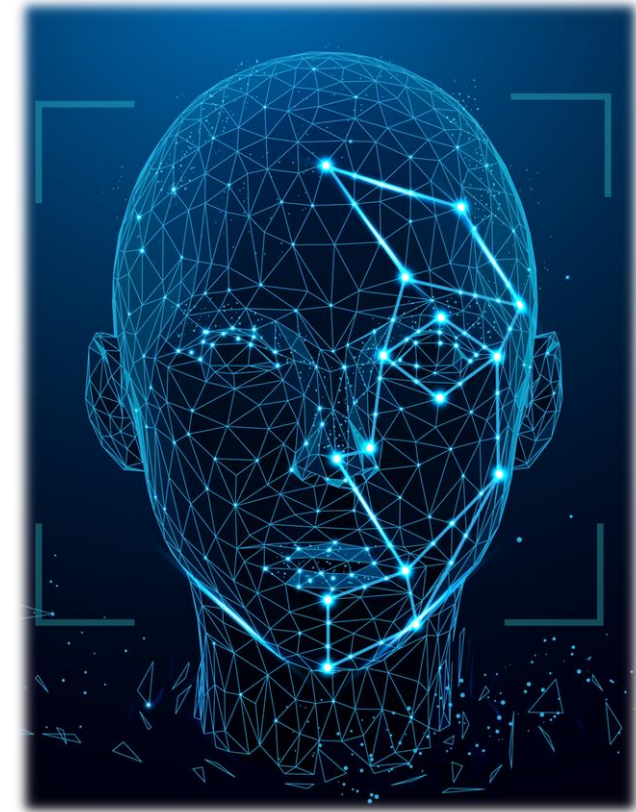
Good Perimeter Surveillance Requires Multiple Technologies

- Infrared
- Motion Detectors
- Radar/Lidar
- Drones
- Robust Access Control
- CCTV with dedicated AI or Computer Vision

Computer Vision enhances perimeter surveillance by automatically detecting, tracking, and analyzing intrusions or suspicious activities in real time, reducing false alarms and improving security response efficiency.

Facial Recognition Technology Can Enhance Perimeter Security

- **Intruder Detection & Identification** – The system can scan and compare faces against a database of authorized personnel, flagging unauthorized individuals in restricted areas.
- **Real-Time Alerts** – If an unauthorized person is detected, security teams can receive instant alerts, allowing them to respond quickly.
- **Access Control Enhancement** – Facial recognition can be integrated with gate or door access control systems to allow or deny entry based on pre-approved facial profiles



Facial Recognition Technology Can Enhance Perimeter Security

- **Continuous Monitoring** – Unlike human guards who may get fatigued or distracted, AI-powered facial recognition operates 24/7 with consistent accuracy.
- **Reducing False Alarms** – By differentiating between known individuals (employees, frequent visitors) and potential threats, the system can minimize unnecessary security interventions.
- **Forensic Analysis** – Recorded footage with facial recognition can help investigators track movements, analyze past security breaches, and improve future threat responses.



What to Look for in a Facial Recognition Solution

- High accuracy and speed at the edge
- Very low racial bias
- Purpose built devices
- Cameras with high resolution , low light capabilities and long focal length lenses
- Access Control devices with robust anti-spoofing and tailgating detection
- Firmware designed to capture the face
- Unified Ecosystem – solutions for surveillance and access control integrated with enterprise software



The Time is Right

- Public sentiment toward facial recognition is shifting
- Advancements in edge-based solutions are driving down costs
- Networks of sensors like access control door stations, surveillance smart cameras and mobile devices can work together to provide more intelligence than ever before
- Privacy options like template on card or template on mobile are available for those with concerns





ASSA ABLOY

Opening Solutions

CHRIS HOBBS
DIRECTOR, NATIONAL ACCOUNTS
ASSA ABLOY OPENING SOLUTIONS

Secured Entry Solutions

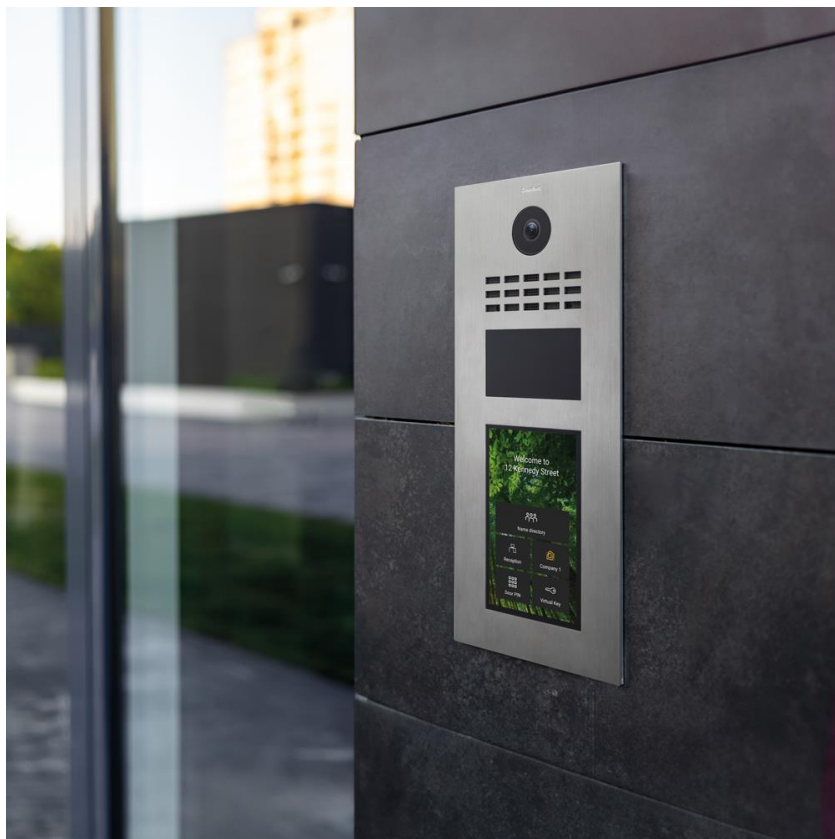
Long range readers and Facial Recognition

- Parking solutions for corporate campus and multi-family applications
 - Allowing access up to 15 meters of range and for up to 200,000 users
- Biometrics for perimeter doorway security
 - Identification of up to 100,000 faces



Secured Entry Solutions

IP Intercom



- HD video intercom w/ ultra wide-angle lens
- Credential reader built-in
 - QR codes, BLE, RFID reading
- Configuration available via an app for easy on-site management
- Integrations with over 85 management software systems

Secured Entry Solutions

Specialty Door Solutions

Bullet Resistant

- 8 levels available
- UL752 Certified
- Meets Federal Government domestic sourcing regulations
- Fire Rated 90 minutes

Blast Resistant

- Up to 100+ psi
- Meet or exceed requirements of the Departments of Defense, State, Homeland Security, and other regulatory groups
- Meets Federal Government domestic sourcing regulations
- Fire Rated up to 3 hours

FEBR

- Tested to withstand 60 minutes of “mob” attack
- Resistant to 5.56 M193, 5.56 M855 and 7.62 M80 ballistic rounds
- Meets Federal Government domestic sourcing regulations
- Fire Rated up to 3 hours

Locking Hardware

Traditional Mechanical Solutions



Forced Entry Solutions



Grade 1 Door Hardware



Patented Key Control

Locking Hardware

Emerging Solutions



Glass Solutions



Intelligent Key Systems



Electronic
Access Control



KURT MEASOM
VP OF GLOBAL ENTERPRISE ACCOUNTS
BOON EDAM

SECURITY IN LAYERS

What's your tailgating mitigation strategy?

DETER
UNAUTHORIZED
ENTRY



Waist High
Turnstiles

DETECT
UNAUTHORIZED
ENTRY



Optical
Turnstiles

PREVENT
UNAUTHORIZED
ENTRY



Full Height
Turnstiles



Security
Revolving Doors

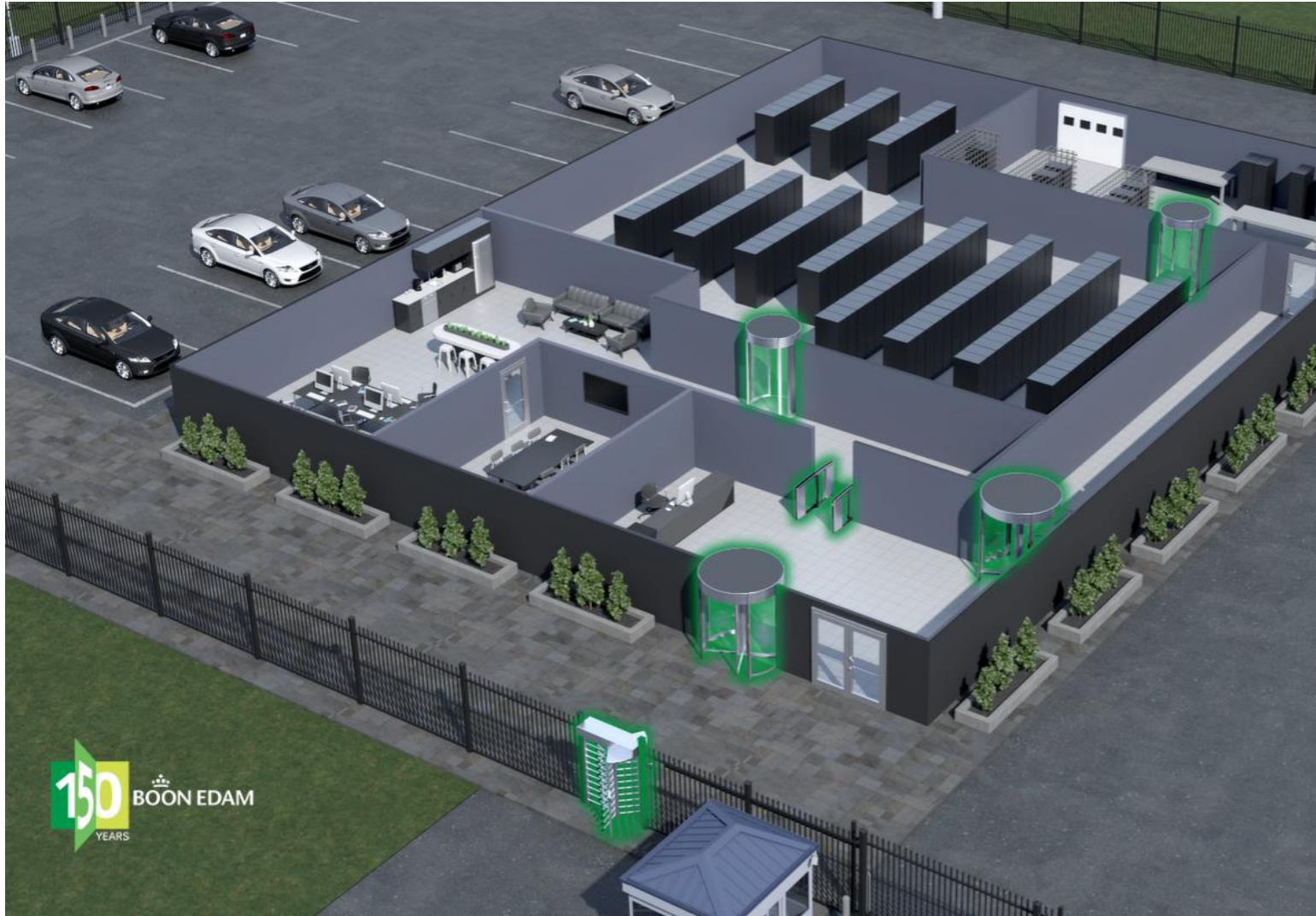


Interlocking
Mantrap Portals

CORPORATE OFFICE - LAYERS



DATA CENTER - LAYERS



AWNING

- Heavy duty structural design-perimeter security
- Climb over prevention
- Meets rigorous wind and snow loads
- Keep data centers in mind





Q&A





Thank you!

**Have thoughts about SIA
Education@ISC?**

Scan the QR Code on the left to provide your feedback
on SIA Education@ISC Sessions at ISC West

In partnership with
The logo for SIA Education at ISC, featuring a graduation cap icon, the text "SIA EDUCATION at", and a yellow square with "ISC" inside.

Built by
The logo for PX, consisting of the letters "PX" in a stylized, bold font.
In the business of
building businesses